

Ulmer Racing
43230 290th St
Menno SD 57045
Phone: 605-387-2833
Fax: 605-387-2883
Email: Srxspec@Gwtc.net

Digital Water Temp Kit Installation Guide

Lowering Antifreeze Level

1. Using a “suction device” of some sorts removing antifreeze from the coolant tank is a great first step. Keep removing coolant until you can no longer reach or remove anymore coolant. A turkey baster with a piece of hose attached works great to suck up coolant!
2. Next you can do things one of two ways. You can proceed to removing the line in which you want to install the coolant splice (some antifreeze will spill out, use rags) or you can remove a hose clamp on a hose that is lower than the point in which you want to install the coolant splice and remove more coolant that way.

Hose Splice installation

1. Next you will want to remove the hose in which you plan to install the splice.
2. Measure the section you want to remove. (This should be 1” wide as that is how wide the bulge on the hose splice is). After cutting install the hose splice and tighten the clamps, then install the water temp sender into the hose splice.

Note: On Apex & RX-1 models the hose splice will be tight between the thermostat housing and the brass “T” going into the cylinder head.

Power Wire Hook Up

1. Find any blue/white wire and this is a keyed hot power source. This will only charge the temp gauge when the snowmobile is running. The most common/easiest location to find the wire is often on the right side of the snowmobile around the chaincase where the fuse box is located.

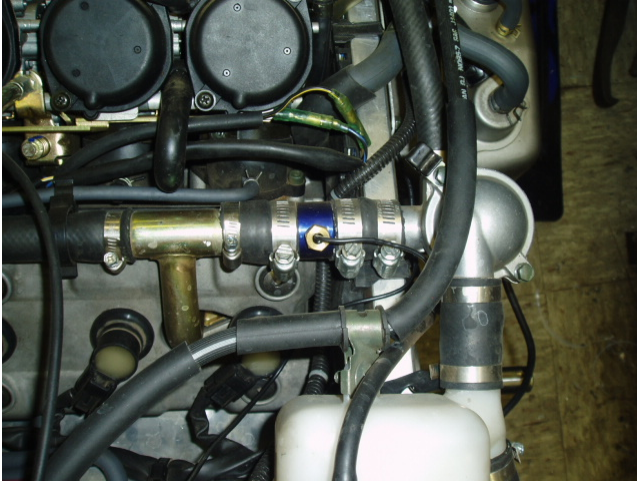
Ground Wire Hook Up

1. The ground wire location can be anywhere that the ground wire will fit under a bolt/nut. On Apex/RX-1 models the ground wire is often easiest to put under one of the 10mm bolts holding the top of the oil tank. Similar locations can be used on other models.

NOTE: After reassembling the snowmobile be sure to get the engine good and hot. Do this three or four times to ensure that there is no air pocket in the coolant system which could result in overheating. It does not hurt to turn the sled side to side slightly and also elevate the front or rear of the sled to help eliminate the possibility of any air pockets.

Installation Pictures

Apex/RX-1 Hose Splice Location



FX Nytro Hose Splice Location



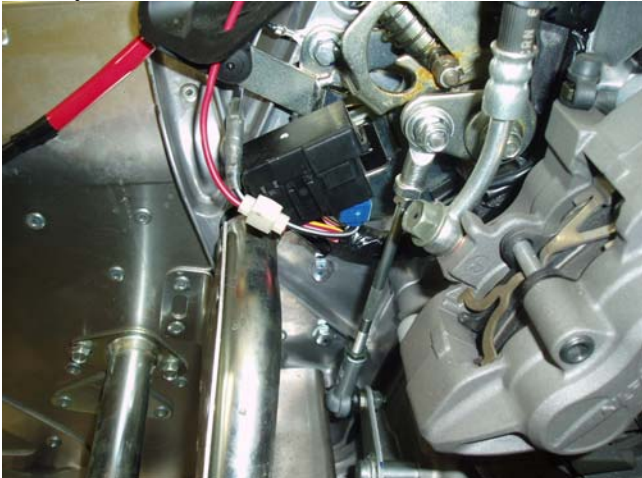
Phazer Hose Splice Location



Phazer Power Wire Location



FX Nytro Power Wire Location



General Ground Wire Location

