

# Ulmer Racing

## Stage 2 Clutch Kit Installation

### Tools Required:

- 2.5mm Allen Wrench
- 8mm Wrench
- Ratchet
- 8mm Socket
- 10mm Socket
- 12mm Socket
- 14mm Socket

### Panel and Belt Removal:

1. The first step is to remove the clutch side panel by turning the three (3) ¼ turn dsuz fasteners. See figure 1.
2. Next we will need to remove the clutch guard by pulling the pin out of the back and lifting the guard and sliding it back off the front mount and out of the way.
3. After the clutch guard is removed you will need to remove the belt. This can be done by pushing against the helix and pushing it back against the ramp. Some effort will be required. See figure 2.
4. Once the clutch is pushed in carefully lift the belt over the outside edge of the clutch and roll it around and off the clutch. See figures 3, 4, & 5.

Figure 1.



Figure 2.



Figure 3.



Figure 4.



Figure 5.



**Primary Clutch Cover Removal:**

1. First you will want to remove every other 10mm bolt on the clutch cover. This can be done with the clutch bolt still installed and the clutch on the crankshaft. See Figure 6.
2. The next step will be to *evenly* loosen and remove the final three (3) 10mm bolts holding the cover on.
3. Before removing the cover completely, mark the cover and moveable sheave with a permanent marker or be sure to look where the “X” lines up on the spider with the cover so it is reassembled the same. See Figures 7 & 8.
4. Now that the clutch cover is removed take the primary spring out and slide the moveable sheave closed. See Figure 9.

Figure 6.

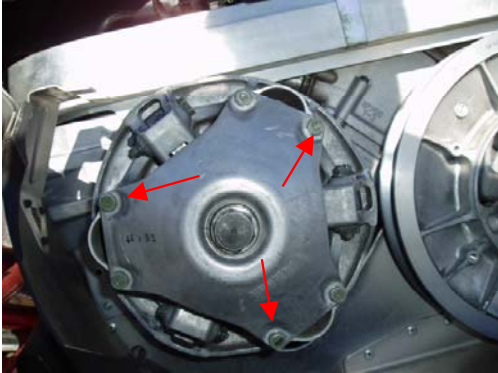


Figure 7.



Figure 8.

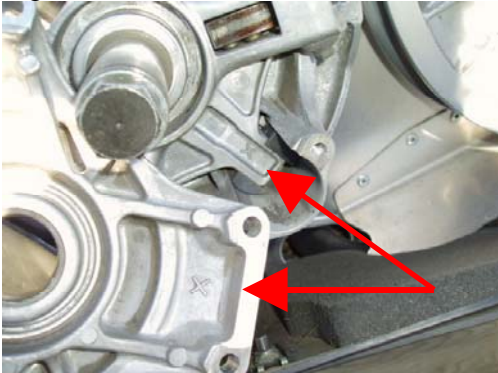


Figure 9.



**Weight Removal and Installation:**

1. First loosen the 2.5mm allen screws one (1) or two (2) turns so the pin can slide through freely. See Figure 10.
2. Next you can loosen the 8mm nut and bolt that runs through the pin. See Figure 11.
3. Carefully remove the pin that runs through the weight. Be sure not to lose the nylon washers that are placed on each side of the weights. See Figure 12 & 13.
4. Now that the stock weight is removed we can install the Super Tip weights.
5. First slide the pin through one (1) nylon washer and one (1) side of the weight. See Figure 14.
6. Next position the other nylon washer and slide the pin the rest of the way through the weight.
7. Reinstall the bolt and tighten securely.
8. Retighten the 2.5mm allen screws until snug. See Figure 15.
9. Repeat these steps for the other two weights.

Figure 10.



Figure 11.



Figure 12.



Figure 13.



Figure 14.



Figure 15.



**Clutch Cover Installation:**

1. First set the new primary spring back in the “pocket” in the spider assembly.
2. Now you can take the cover and line the “X” up on the cover and spider assembly or the line you made with permanent marker up and slowly start three (3) of the 10mm bolts.
3. Evenly tighten down the three (3) bolts.

### **Secondary Helix and Spring Swap:**

1. First remove the bolt holding the secondary onto the jackshaft with your 14mm wrench. Be careful that the washers both on the inside and outside of the secondary stay where they should and don't stick to the secondary or fall off and get lost. See Figure 16.
2. Take a permanent marker and mark one of the helix towers and the stationary sheave. See Figure 17.
3. Now loosen the three 12mm nuts on the helix evenly and with a firm grip remove the helix from the secondary. See Figure 18 & 19.
4. After the stock helix and spring are removed install the secondary spring included in the kit in the #3 position on the secondary. See Figure 20.
5. Next put the helix on and the spring in the #6 position. See Figure 21.
6. Now grip the secondary and wrap the helix to the right and push it down onto the helix towers and install the three (3) nuts. See Figure 22 & 23.
7. Before tightening up the helix completely take your hand and turn the sheaves opposite of each other slightly so the helix isn't contacting the button on the secondary. See Figure 24.
8. Now tighten the three (3) 12mm nuts evenly until snug.
9. Reinstall the secondary clutch onto the jackshaft and tighten the 14mm bolt.
10. Reinstall the belt and you're on your way!

Figure 16.



Figure 17.



Figure 18.

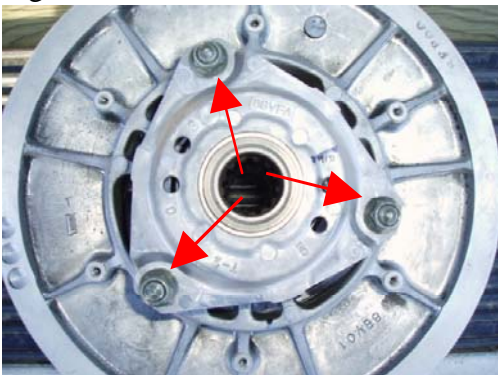


Figure 19.



Figure 20.



Figure 21.



Figure 22.

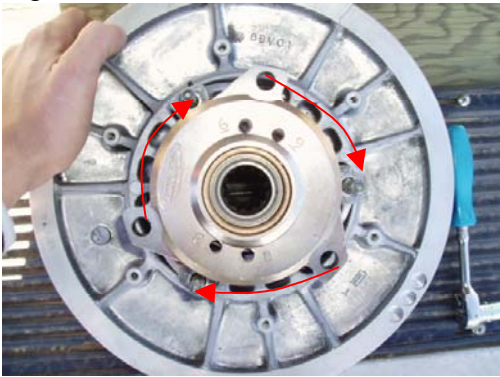


Figure 23.



Figure 24.

